

# MOHLALA GROUP

FINANCIAL || ENERGY || CONSTRUCTION || TELECOMMUNICATIONS



INVESTING IN THE FUTURE

[www.mohlalagroup.co.za](http://www.mohlalagroup.co.za)



A photograph of a construction site showing several workers in safety gear (hard hats, high-visibility vests) building a brick wall. Scaffolding is visible around the structure. The text "SAFETY STARTS WITH US" is overlaid in white capital letters on a semi-transparent dark band across the upper middle of the image.

SAFETY STARTS WITH US

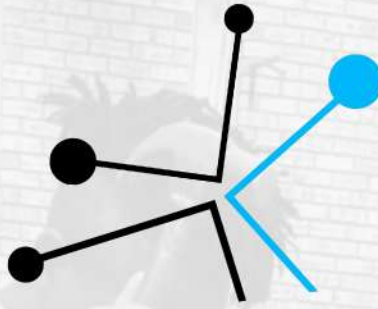




# TABLE OF CONTENT

## CONTENT:

<b>1. Background</b>	Page 4
<b>2. Vision &amp; Mission</b>	Page 5
<b>3. Organisational Structure</b>	Page 6
<b>4. Health &amp; Safety Policy</b>	Page 7
<b>5. Our Services</b>	Page 8
a. Finance Services	Page 9
- PO Financing	
- Joint Ventures	
- Partnerships	
b. Energy	Page 12
- Solar Installations	
- Back-Up Power Solutions	
c. Construction	Page 14
- General Construction	
- Civils	
d. Telecommunications	Page 17
- Telecommunications Services	
<b>6. Our Clientele &amp; Affiliates</b>	Page 19
<b>7. Contact Us</b>	Page 20



Mohlala Group is a dynamic and innovative company specializing in four key sectors: Finance, Energy, Construction, and Telecommunications. We are driven by a commitment to implementing forward-thinking strategies and creative solutions that ensure the achievement of our clients' objectives.

Managed by a team of highly trained Black professionals, Mohlala Group prioritizes continuous development and training to maintain leadership in our industry. Our commitment to staying ahead of the latest trends in business development, coupled with leveraging available resources from both the private sector and government, positions us as a leader in each of the sectors we serve.


At Mohlala Group, we believe in the core values of dedication, integrity, and a commitment to excellence. These values drive us toward our ultimate goal of becoming the top provider of Financial, Energy, Construction, and Telecommunication services.

We offer cost-effective and reliable full-turnkey construction and telecommunication services, backed by a team that applies strong methodologies and best practices to deliver fast, market-ready solutions. Regardless of the project size or complexity, Mohlala Group is equipped to handle diverse challenges. Our extensive expertise, technological skills, and focus on process efficiency enable us to deliver valuable solutions, supporting our clients every step of the way.



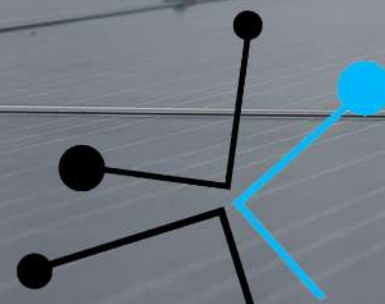
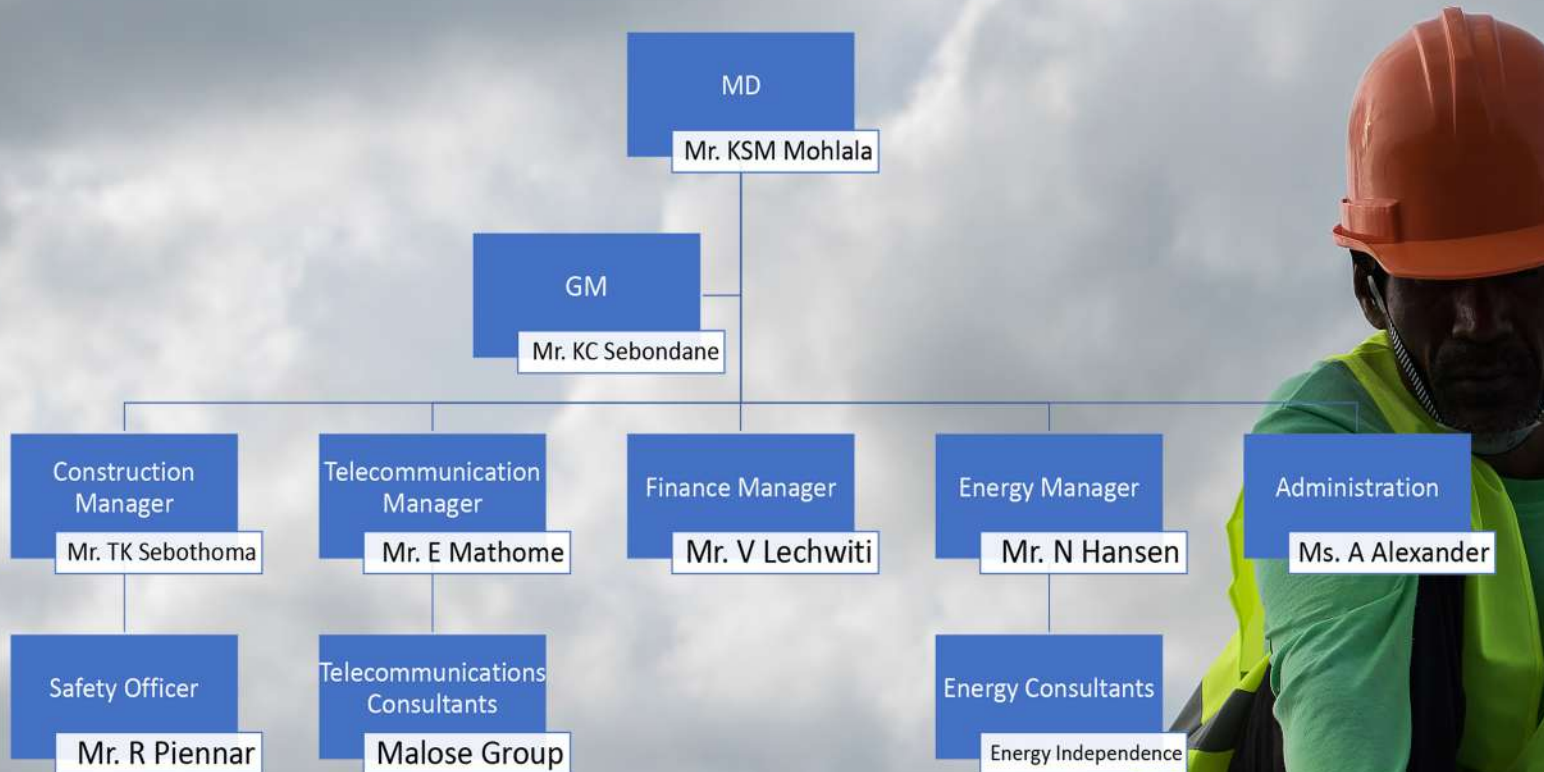


# OUR VISION & MISSION



TO BE RECOGNISED AND RESPECTED AS THE FULL-TURNKEY SUPPLIER OF CHOICE FOR FINANCE, ENERGY, CONSTRUCTION AND TELECOMMUNICATIONS, AS WE CONTINUE TO INVEST IN THE FUTURE FOR GENERATIONS TO COME.

# ORGANISATIONAL STRUCTURE



Directors: Mr. KSM Mohlala



# SAFETY POLICY

At Mohlala Group, we have an unwavering commitment to the safety of all our sites. Our strict Health and Safety Policy is a cornerstone of our operations, as we believe that:

A safe site is a well-managed site.

A well-managed site is a profitable site for all stakeholders, including the client.

We rigorously adhere to legislative requirements, ensuring that all accompanying documentation and procedures are fully implemented without compromise. Our collaboration is exclusive to service providers who meet the same stringent safety standards we set for ourselves.

We also advocate for the appointment of independent Safety Officers on-site to ensure professional, impartial evaluation and continuous monitoring of safety protocols.

Additionally, Mohlala Group is proud to uphold an Environmental Policy and a Contractors Considerate Policy, reinforcing our professionalism. These policies positively influence the experiences of our clients, while ensuring that our business operations complement the broader community and environment.



A man with a beard and short dark hair, wearing a blue denim shirt, is leaning over a desk. He is looking down at a stack of papers and a folder. The background is a blurred office environment with wooden beams and plants.

# OUR SERVICES



A professional man with short dark hair, a beard, and glasses is shown in profile, looking towards the left. He is wearing a dark suit jacket over a light-colored shirt and a dark tie. His right hand is on a laptop keyboard. The background is a blurred cityscape with tall buildings and greenery. A semi-transparent dark horizontal band is overlaid across the middle of the image, containing the text "FINANCE SERVICES" in white, bold, sans-serif capital letters.

# FINANCE SERVICES

A man in a suit is sitting at a desk, working on a laptop. The scene is dimly lit, with warm lights in the background, suggesting a professional office environment at night.

# FINANCE SERVICES

## **Our financial services are done through the following portfolios:**

### **1. Governmental & Reliable Private Company Purchase Order (PO) Funding**

We are equipped to assist in funding and executing projects awarded to you by South African and Zambian Government entities or Parastatals. We can provide financial backing up to R5 Million, and we are committed to helping you successfully complete the project.

Our approach involves thorough due diligence and a focus on ensuring all parties benefit, gain valuable experience, and grow throughout the process. Our ultimate goal is to achieve the best possible outcomes for the client.

### **2. Joint Ventures:**

We are open to Joint Ventures within our areas of expertise, including energy, construction, and telecommunications.

Our organization is fully equipped to provide the necessary resources—capital, skilled human resources, and machinery. With a Board comprising experienced leaders and influential individuals, we are well-positioned to successfully execute projects in these sectors.

Focused on delivering value to both you and your clients, we actively engage in positive partnership discussions aimed at creating opportunities that will significantly impact your future.

### **3. Partnerships:**

As we aim to build lasting relationships and a value-driven network, we are committed to partnering with our clients to establish a long-term vision. Together, we create detailed plans that address future uncertainties, ensuring measures are in place to secure long-term financial stability.

In doing so, we position our companies to navigate any challenges or disruptions that may arise across different sectors, ensuring resilience and sustained growth.



# FINANCE PROJECTS

Projects:	Amount:	Status:	Year:
Tshitadingaka Contractors CC (WSM Group)	R12 820 421.38	Active	2025



# ENERGY SERVICES







# ENERGY SERVICES

We are building towards becoming a leading provider of world class solar and back-up power solutions, specialising coming up with creditable and reliable energy systems across South Africa and its neighbouring countries.

With the partnership we have with Energy Independence and 115 Electrical Solutions, we consider ourselves as the new kids on the block in the industry that is backed up by more than 10 years of experience in the Energy Sector.

With pre-assembled Compact Power Stations, integrated back-up power solutions built to meet SANS standards.

The solutions we bring features:

- Lithium Batteries
- Off-grid Inverters: Uninterrupted power supply (UPS) to maintain continuous operations
- Solar Ready and Easy to Deploy: Serve as reliable power sources

These solutions are suited for:

- Homes
- Offices
- Critical Appliances







# CONSTRUCTION SERVICES





# CONSTRUCTION SERVICES

## GENERAL CONSTRUCTION

### a. HOUSING

We have vast expertise in every facet of social housing, such as:

- Rapid Land Release Programs;
- Essential Services;
- Peoples Housing Projects
- Project Based (RDP Type) Housing
- Community Residential Units (CRUs)
- Institutions Upgrades
- Slum clearance
- institutional housing
- rental housing
- mine hostel improvements
- FLISP opportunities
- breaking new ground
- and housing for military veterans

The Mohlala Group has set its sights on the social housing sectors mentioned above as of January 2025. We project that Mohlala Group will provide roughly 0.5 percent of all social housing that is built and developed in South Africa.

### b. BUILDING

With the help of our CEO and Managing Director, we have conducted a variety of business operations in the general building.

We have finished a number of construction projects, including:

- MyAfrica Holdings – Villa Lantana
- Condcor – City of Tshwane Multi-dwelling units
- City of Ekurhuleni – Multi-dwelling units



# CONSTRUCTION SERVICES

## CIVILS

Mohlala Group's Civils division is dedicated to excellence in delivering top-notch engineering and construction projects that meet deadlines and budgets. Safety, quality, and environmental responsibility are core values that we prioritize.

The highly skilled, professional, and experienced staff at Mohlala Group makes an effort to uphold the company's values and work culture. Through the organization's structure, equal opportunity combined with targeted training guarantees that every employee develops to meet our mission of genuinely *INVESTING IN YOUR FUTURE*.

An essential component of effective social housing and construction, civil engineering continues to play a significant role in our operations.

Efficient operational and financial systems, along with a strong emphasis on customer satisfaction, are key factors contributing to the success of our Civils division.

Our expertise includes a wide range of disciplines such as:

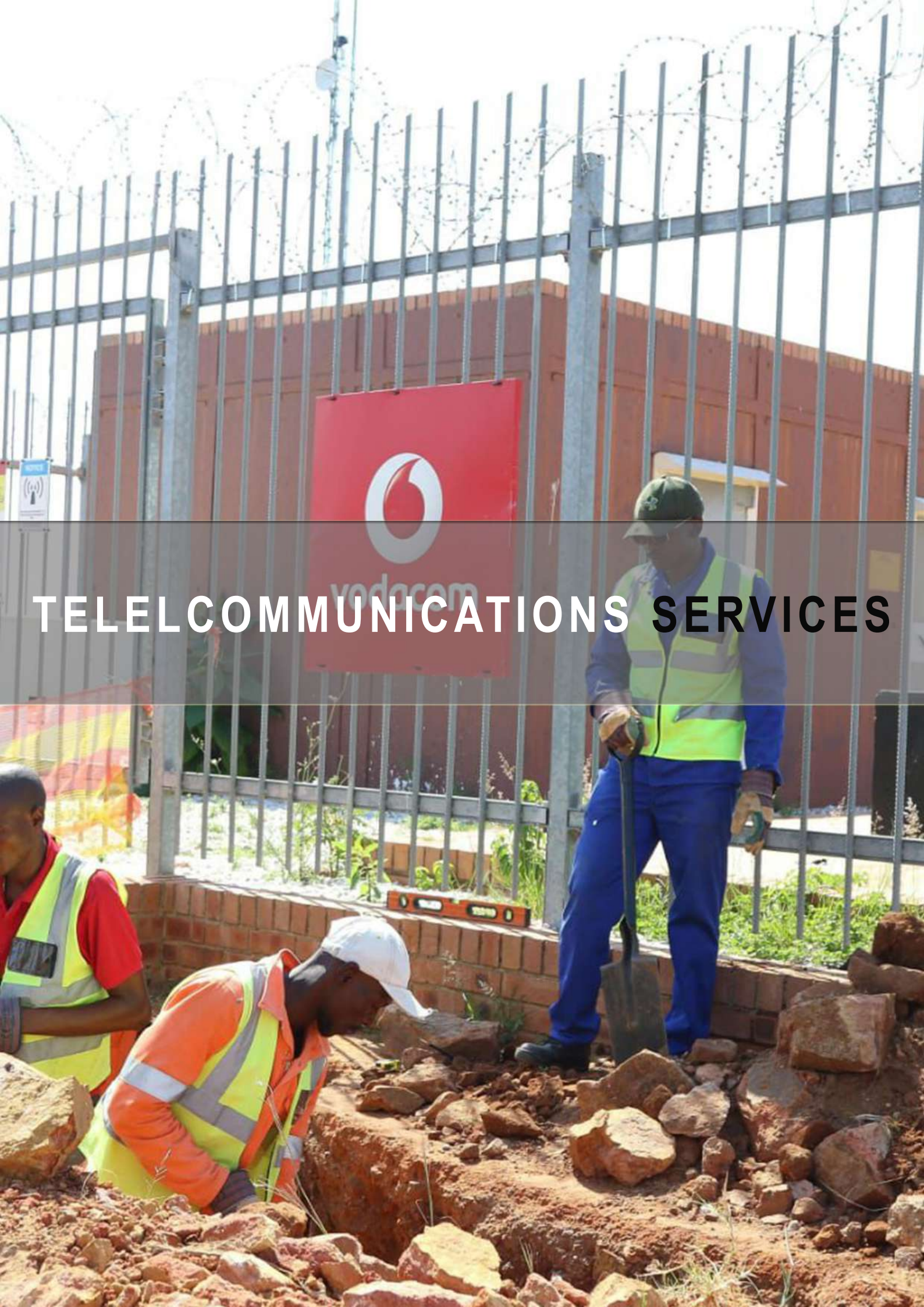
- Structural Concrete Construction
- Township Services: Bulk and Reticulation
- Road Construction and Rehabilitation
- Mining Infrastructure
- Bulk Earthworks
- Specialised Concrete Repair and Rehabilitation
- Infrastructure Services Development
- Water Treatment Works

At Mohlala Group, we are dedicated to providing innovative engineering solutions and ensuring the satisfaction of our clients.

## ***BEYOND CONSTRUCTION!***

***100! PASSIONATE ABOUT CONSTRUCTION***





# TELECOMMUNICATIONS SERVICES





# TELECOMMUNICATIONS SERVICES

Mohlala Group's telecommunications division concentrates on full-turnkey fibre infrastructure solutions that will not only be reliable, but that connects the country through trusted Fibre Network Owners.

With partnership with leading key players like Malose Group and Bester Technologies, we see ourselves as a driving force in the telecommunications industry.

We offer:

- Fibre optic design and infrastructure development (Long haul, Fttx, Fttb and Fttth)
- Aerial Fibre Pole planting and Cable stringing - Overhead installation (OH):
  - Long Span ADSS Installations
  - Short Span Aerial installations
- Underground Fibre installation (UG)
- Mechanical trenching
- Road cutting and re-instatement
- Bi-directional Drilling.
- DCB Test and results
- Moulin- Driveway crossing.
- Optical Ground Wire (OPGW) Installations

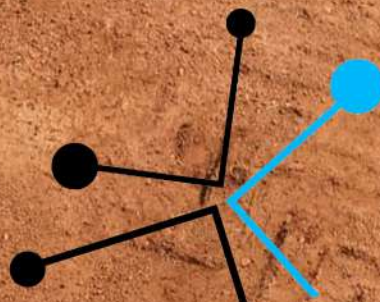
Our services also stretch to:

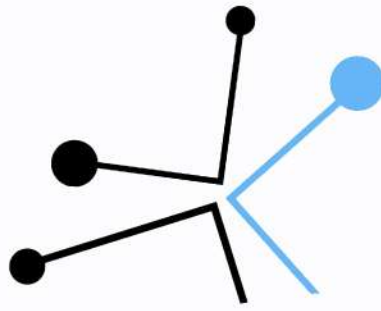
- Floating/ Hauling of Fibre Optic
- Splicing & Testing
- OTDR Test Results
- Duct Integrity Testing (DIT)
- Project management & Reporting
- Maintenance & Call Out for Fibre Repairs
- Wayleave Application
- Site Survey & Planning
- Stakeholder Management





# CLIENTS & AFFILIATES





# MOHLALA GROUP

INVESTING IN THE FUTURE

## CONTACT US

**Contact:**

***Mr. K Mohlala***

katlego@mohlalagroup.co.za  
066 193 9003

**Position:**

***CEO***

***Mr. K Sebondane***

kgomotso@mohlalagroup.co.za  
078 288 4417

***General Manager***

**General Contact:**

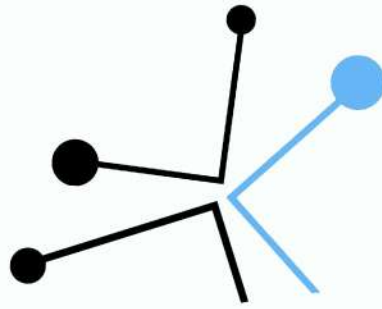
info@mohlalagroup.co.za  
careers@mohlalagroup.co.za  
www.mohlalagroup.co.za

[www.mohlalagroup.co.za](http://www.mohlalagroup.co.za)

---

Finance - Energy - Construction - Telecommunications





# MOHLALA GROUP

INVESTING IN THE FUTURE

[www.mohlalagroup.co.za](http://www.mohlalagroup.co.za)

---

Finance - Energy - Construction - Telecommunications